

Maria Carmela Osorio-Capistrano

Architect

Al Hassawi Building,
Qassimya Area
Sharjah, U.A.E.

+971-50-8433488
Mobile

Driver's License: 1455882
Email: architect.osorio@gmail.com



Professional Experience

Architect — Dubai Civil Engineering (Al Hamad Contracting Company L.L.C.)
<http://www.al-hamad.com>

February 2007-Present

PROJECTS INVOLVED:

- Proposed Business Bay Residential Building (G+19)-Business Bay, Dubai
 - Schematic Planning
 - Project Production Coordination
 - Checking of drawings in relation to conforming with the different Regulations governing the project
- Proposed Medina Tower Residence (G+3P+18)-Jebel Ali
 - Schematic Planning
 - Checking of drawings in relation to conforming with the different Regulations governing the project
 - Project Production Coordination
- Proposed Dubai Land Student Residences (B+G+6)
 - Schematic Planning and Design
 - Checking of drawings in relation to conformation with the different Regulations governing the project
 - Project Production Coordination
- The World – Proposed Island of Spain
 - Schematic Planning and Design
 - Checking of drawings in relation to conformation with the different Regulations governing the project
 - 3D Visualization with 3D Max and Vray
- Pacific Al Marjan, Ras Al Khaimah (B+2P+G+9)
 - Schematic Planning and Design
 - Checking of drawings in relation to conformation with the different Regulations governing the project
 - Drawing Coordination
 - Project Coordination with MEP & Structural Departments
- Al Hamad Group of Companies Office, Sharjah SAIF Zone (G+M+4)
 - Architectural Planning and Design
 - Drawing Coordination
 - Project Coordination with MEP & Structural Departments
 - 3D Visualization with 3D Max and Vray
 - Preparation of Drawings for Municipality Submissions & Civil Defense
- Orthopedic Specialty Hospital (3B+G+M+7), Healthcare City Dubai
 - Drawing Coordination
 - Assists in Preparation of Drawings for Municipality Submissions
 - Incorporate 2Dimensional Drawings to 3D
 - 3D Max and Vray Rendering
- Mizin Dubai Land (B+G+7) Residential Building
 - Architectural Planning and Design
 - Preparation of Drawings for Municipality Submissions & Civil Defense
- Faisal Barakat (B+G+8) Residential Building
 - Architectural Planning and Design Revisions

- Drawing Coordination
- Project Coordination with MEP & Structural Departments
- Preparation of Drawings for Municipality Submissions & Civil Defense
- Bay Central, Dubai Marina (4B+G+M+38) http://www.dubaiselect.com/dubai_property_developments/bay-central/
 - Project Drawing Coordination-East Tower (Marriot Hotel Side)
 - Assists on Area Planning Design
 - Assists on preparation of Drawings for Municipality Submissions
- Jordan Gate, Bahrain
 - Incorporate 2D Drawing to 3D using 3d Studio Max & Vray with Photoshop Enhancements
- Al Bareeq Office Building- Bonyan Emirates
 - Incorporate 2D Drawing to 3D using 3d Studio Max & Vray with Photoshop Enhancements
- Thamin Villa, Jordan
 - Incorporate 2D Drawing to 3D using 3d Studio Max & Vray with Photoshop Enhancements
- Rotana Hotel
 - Incorporate 2D Drawing to 3D using 3d Studio Max & Vray with Photoshop Enhancements
- DOZ Residential Blocks
 - Restaurant Planning & Design
 - Incorporate 2D Drawing to 3D using 3d Studio Max & Vray with Photoshop Enhancements

CAD Architect— Nouveau Construction

August 2006 - January 2007

PROJECTS INVOLVED:

- The Palm Jumeirah Apartments
 - Incorporate Structural Shop Drawings in AutoCAD
 - Incorporate Architectural Drawings in AutoCAD & GCAD Software (Japanese)

**Design Visualization Architect
Environments Global - Re:Source Partners**
<http://www.environments.com.ph>

March 2005-June 2006

PROJECTS INVOLVED:

- 3D Renderings (Interior / Exterior) for the Following Projects:
 - Mc Donald's Restaurants
 - Teriyaki Boy Restaurants
 - Pancake House Restaurants
 - Dencio's Grill Restaurants
 - Kaloo Retail Shop
 - Export Bank
 - Accenture Philippines
 - SAP Philippines

- Accenture Cybergate Office
 - Incorporate Interior Drawings to AutoCAD

CAD & 3d Architect— Gabriel Formoso & Partners
<http://www.gfarchitects.com>

March 2005-June 2006

PROJECTS INVOLVED:

- Serendra-Residential Condominium <http://www.gfarchitects.com/images/residential/serendrad13.jpg>
 - Incorporate Architectural Drawings to AutoCAD
 - Interior Renderings

Junior Architect— Concrete Visions Builders Group

July 2002 - September 2003

PROJECTS INVOLVED:

- Garcia Residence, Alabang Hills Muntinlupa City
 - Architectural Planning and Design
 - Drawing Coordination
 - 3D Max Rendering

-Assists in Preparation of Drawings & Documents for Municipality Submissions

Cabunag Residence, BF Homes Paranaque
-Architectural Planning and Design
-Drawing Coordination
-3D Max Rendering

Education

Bachelor of Science in Architecture, University of Santo Tomas, Manila Philippines, 2003

Secondary Education, Colegio San Agustin Makati City Philippines, 1998

Primary Education, Colegio San Agustin Makati City Philippines, 1994

Skills

Architecture & Interior Design Experience

AutoCAD 2000 & Up (10 Years Experience)

3D Studio Max 7 & Up (7 Years Experience)

Chaos Group: Vray Interior & Exterior Rendering (4 Years Experience)

Adobe Photoshop

Sketchup

GCAD Software (Japanese)

MS Office Applications

Personal Details

Name:	Maria Carmela Osorio-Capistrano
Age:	29 years old
Date of Birth:	August 01, 1980
Status:	Married
Nationality:	Filipino
Languages Spoken/Written:	English, Filipino

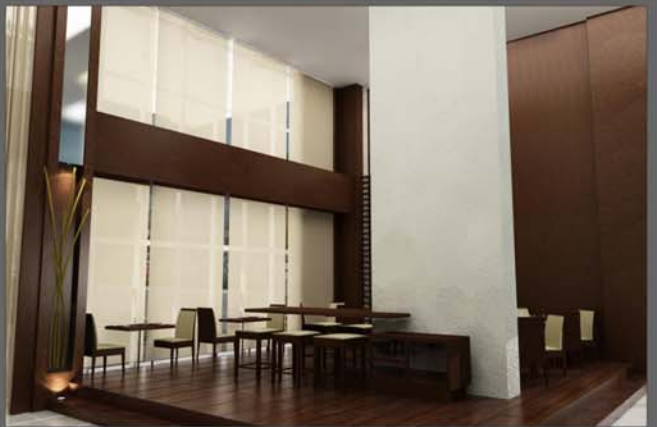
Reference

Available Upon Request.



EXTERIOR RENDERINGS

BY: MARIA CARMELA OSORIO-CAPISTRANO



INTERIOR RENDERINGS

BY: MARIA CARMELA OSORIO-CAPISTRANO